

Advances in Technology and the AEC Industry

2021 Fall Conference - Jekyll Island, GA

21 September 2021



K. Scott Gordon, AIA
NCARB, LEED AP
Principal, CPL Architects,
Engineers, and Planners
Higher Education and
Community Team Leader

Thomas H. Phoenix, P.E.,
FASHRAE, LEED AP
Principal, CPL Architects, Engineers,
and Planners
ASHRAE Presidential Member
Chair, AEDG Steering Committee
Co-Chair, ASHRAE Task Force for
Building Decarbonization



Speakers

**Advances in Technology
and the AEC Industry**

This presentation is protected by U.S. and international copyright laws.

Presentation adapted from an ASHRAE Distinguished Lecturer program.

Graphics and animations courtesy of CPL unless otherwise noted.

Reproduction, distribution, display and use of the presentation without written permission of the speaker is prohibited

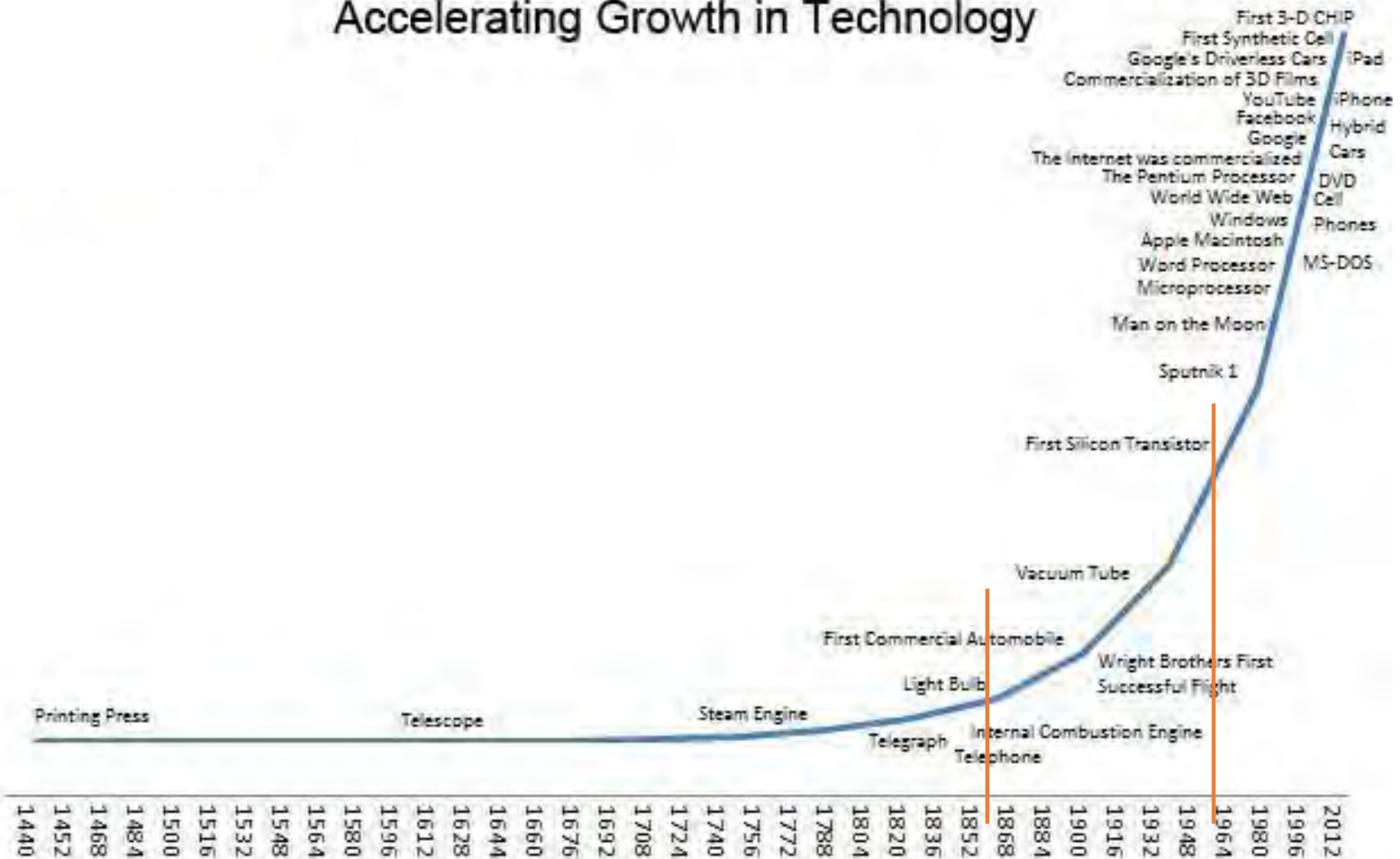
- ! *Discover the Technology Curve*
- ! *Review Tech History & Technology Life Changers*
- ! *Look at Current Trends and How They Have Affected Our Industry*
- ! *Explore What the Future Might Look Like*

Learning Objectives

Advances in Technology
and the AEC Industry

*A long time ago
in a galaxy far,
far away.....*

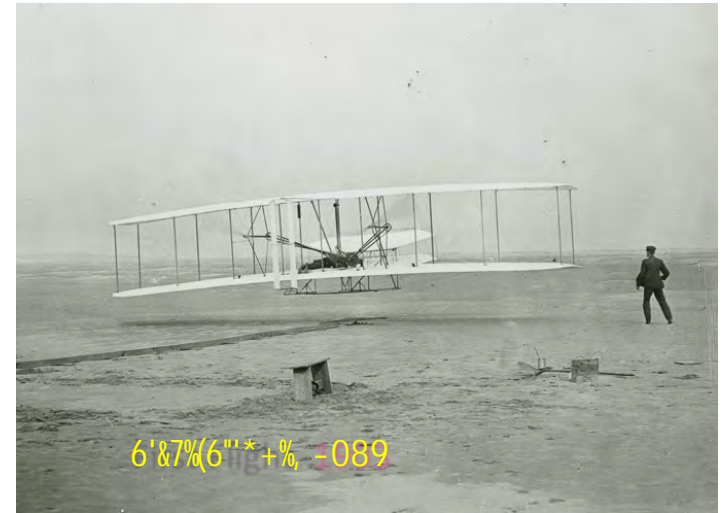
Accelerating Growth in Technology



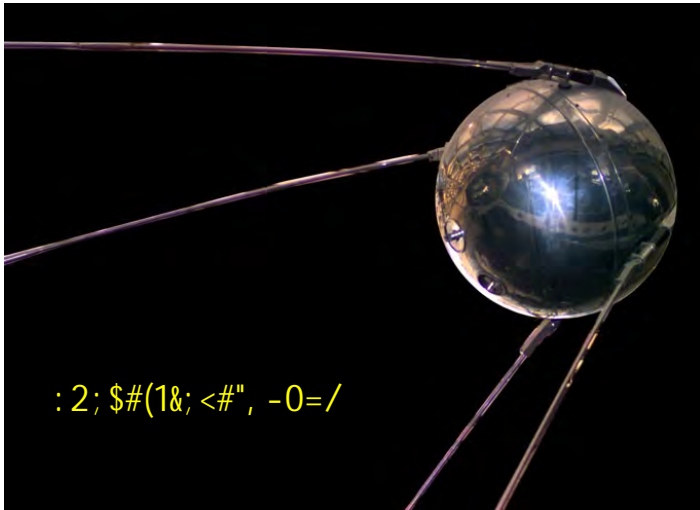


!"#\$%&'\$()*'+%, -./0

1#"#2+34#, -. /5



6'&7%(6"'+%, -089



:2;\$#(1&;<#" , -0=/

!"#\$%&'&()*'+,-"*. \$/%("01



!"#\$%&'()*%
*++,#%-'.+/"#0)% 2345

67,;89"#)
:7;0')'<"% 2345

>6:;%?-% 23@A

!"#\$%&'()*+,-"*.\$/%('01

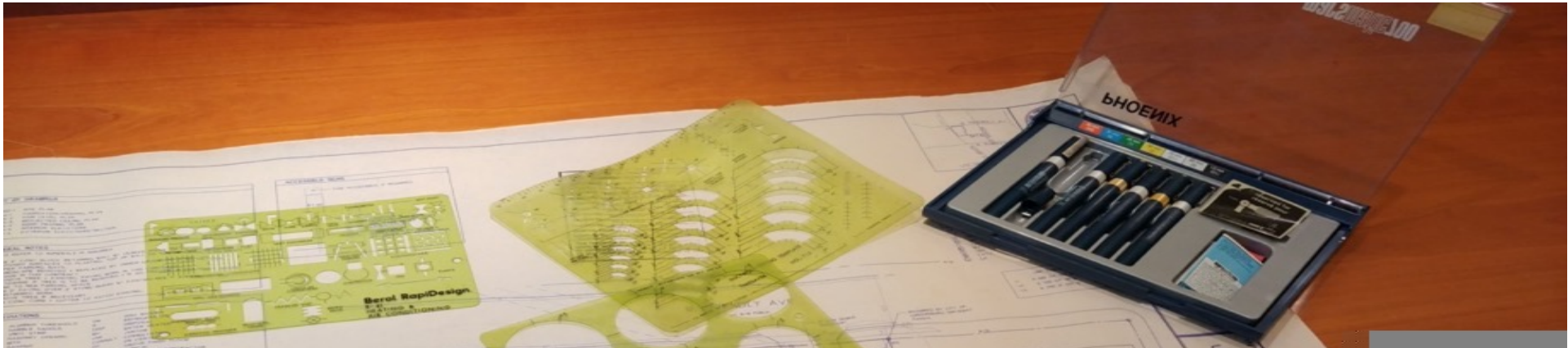


! "\$%&'&()*
+,-. \$/%('01

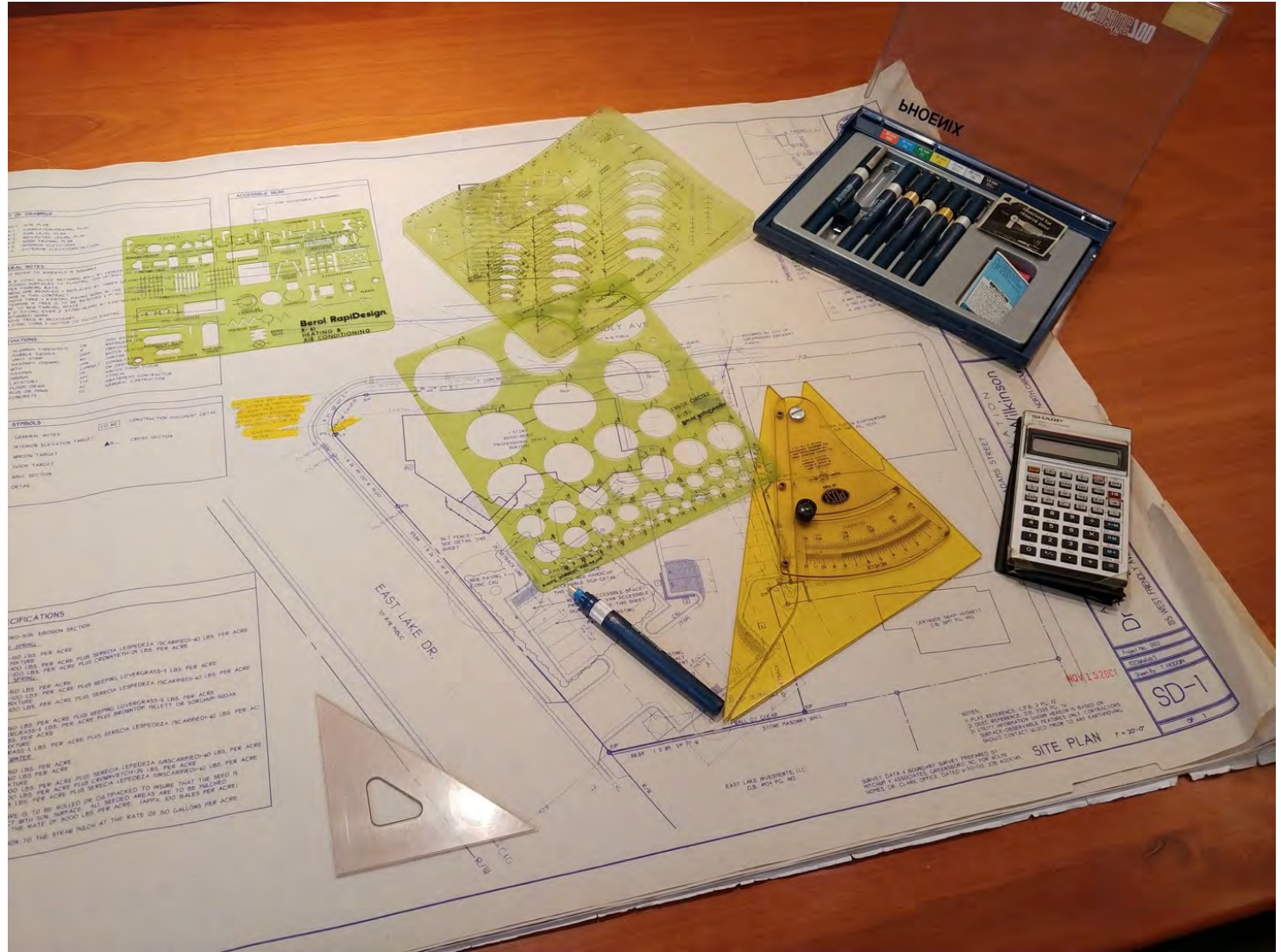
!"\$%"&\$' (#) (#*+, ((
B' 0,C%B7C#%B# (% 23@3

AEC Industry Changes?

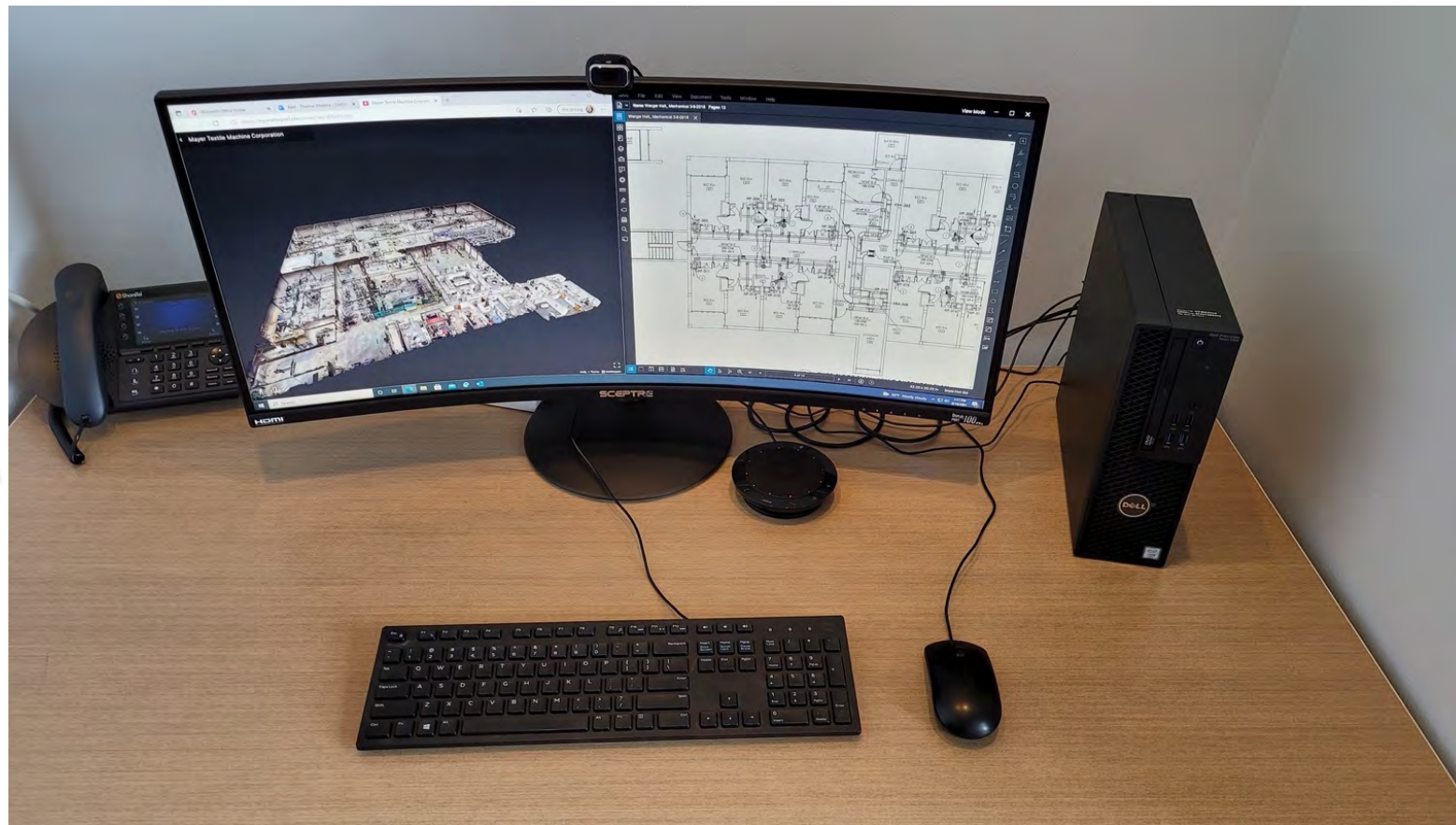
Advances in Technology
and the AEC Industry



!&&'1*&-*
2\$!"*!0/3"



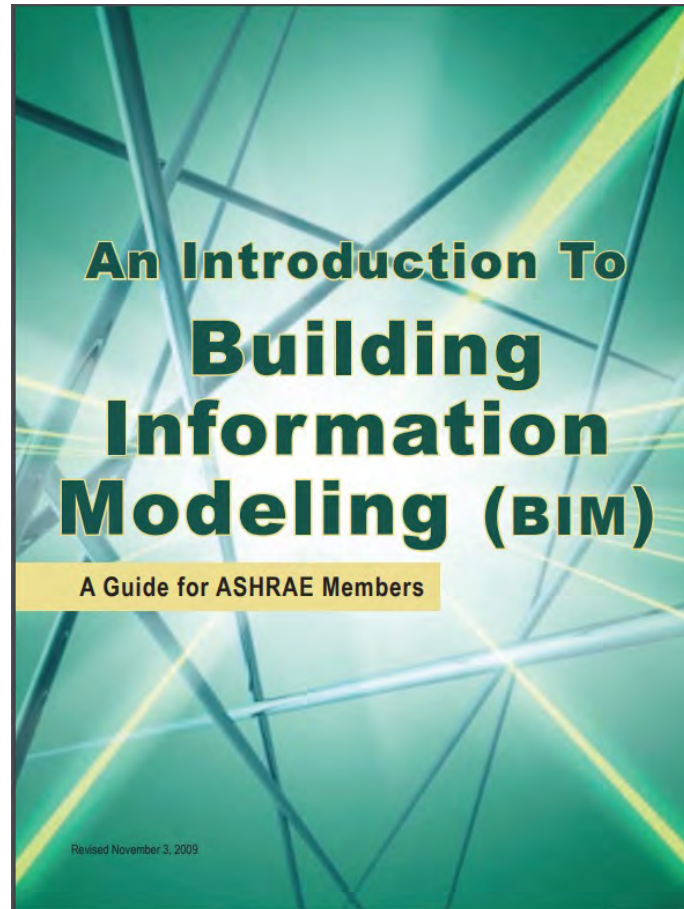
!&&'1*&-*
2\$!"*!0/3"



New Trends for AEC

Advances in Technology
and the AEC Industry

!"#



The cover has a dark header with logos for the National Institute of Building Sciences and buildingSMART Alliance. Below is a purple banner with the title. The main image shows a 3D wireframe model of a building. A text box at the bottom provides a definition of BIM, and a 'More' link is present. The footer contains the organization's tagline and website.

National Institute of BUILDING SCIENCES buildingSMART Alliance®

National BIM Standard-United States®

When building information modeling (BIM) first came into use, it was seen simply as a three-dimensional (3D) model of a facility. However, such a basic explanation does not adequately convey the potential of digital, object-based, interoperable BIM processes and tools when used with modern communications methods.

As first defined in the *National BIM Standard-United States®* (NBIMS-US™), a BIM "is a digital representation of physical and functional characteristics of a facility. As such, it serves as a shared knowledge resource for information about a facility, forming a reliable basis for decisions during its life cycle from inception onward."

[More](#)

An Authoritative Source of Innovative Solutions for the Built Environment www.nibs.org

20&%"1

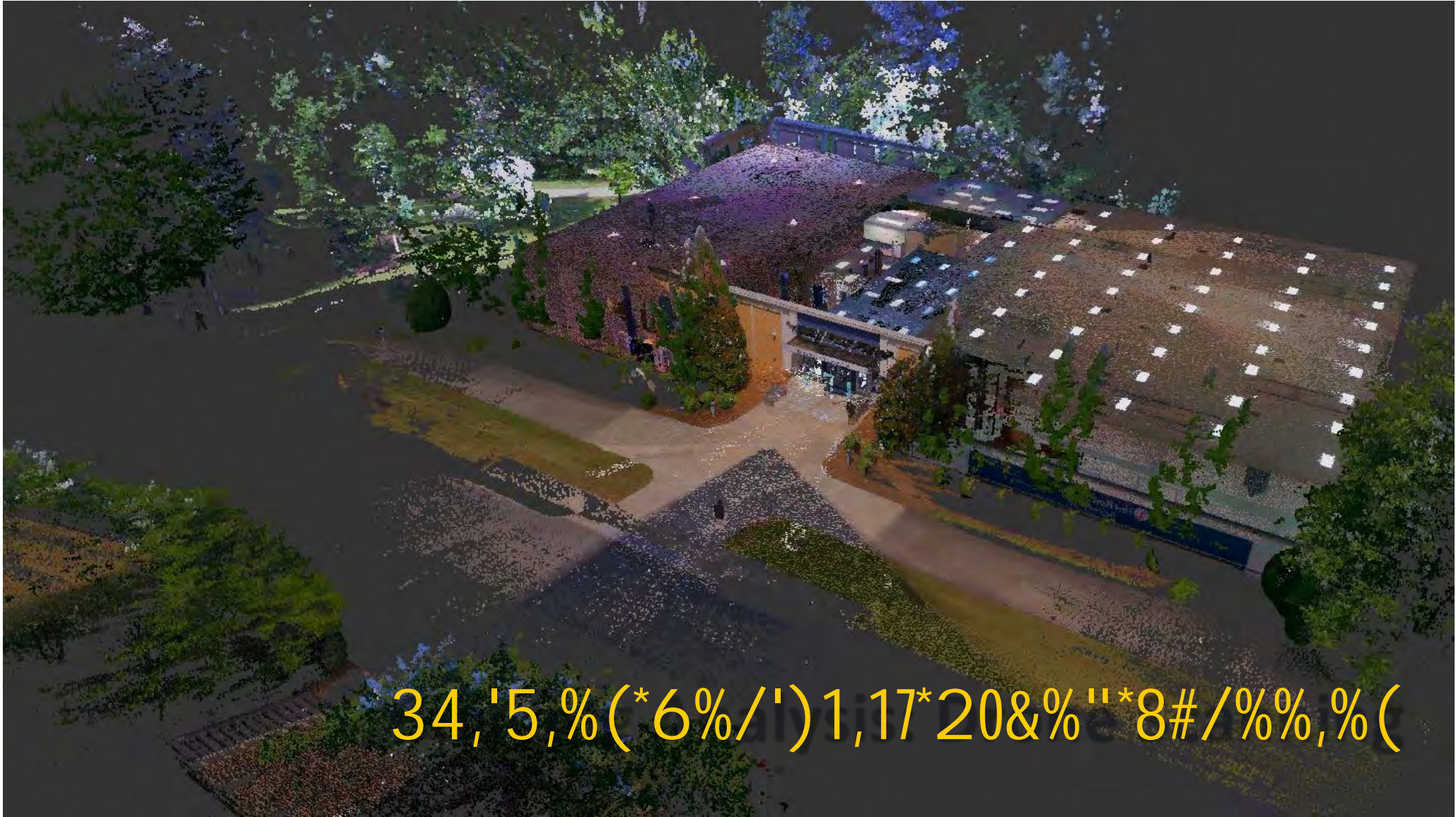


20&%"1



20&% "1





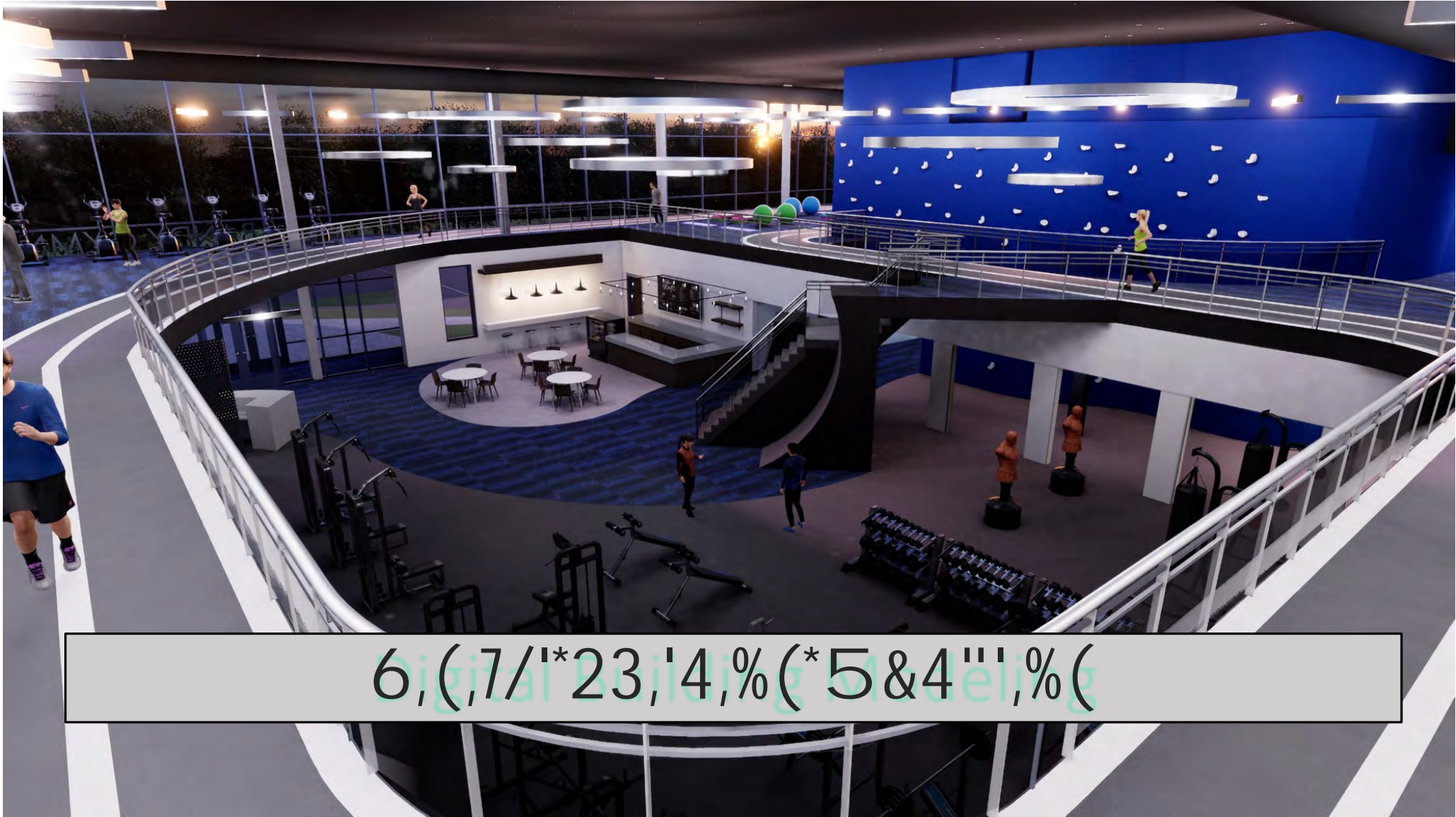
34, '5, % (*6% /') 1, 17*20&% "'*8# /%%, % (

34, '5, % (*6%/') 1, 17* + / 1" 0*8# / %%, % (





23,4%(*
5&4'',%(



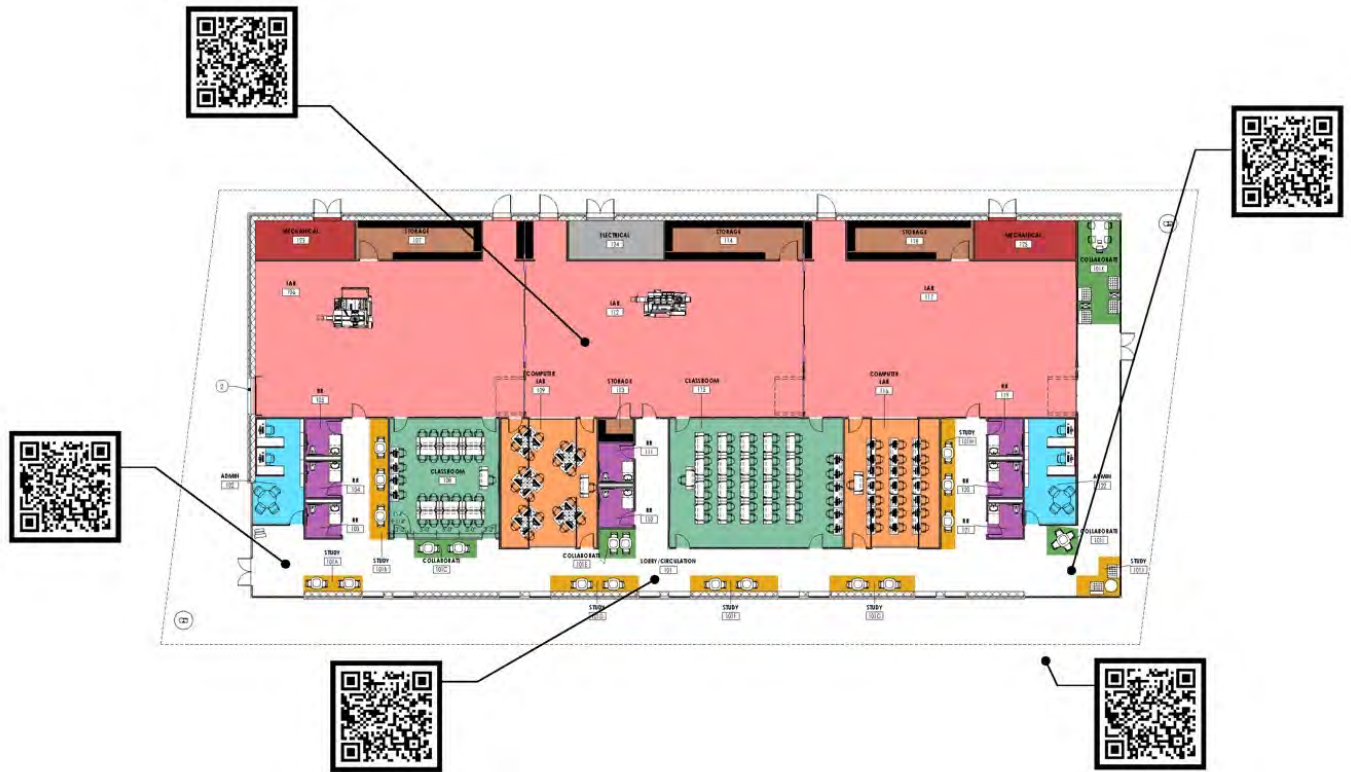
6, (, 7, /, *, 23, !, 4, %, (* 5 & 4''' , % (



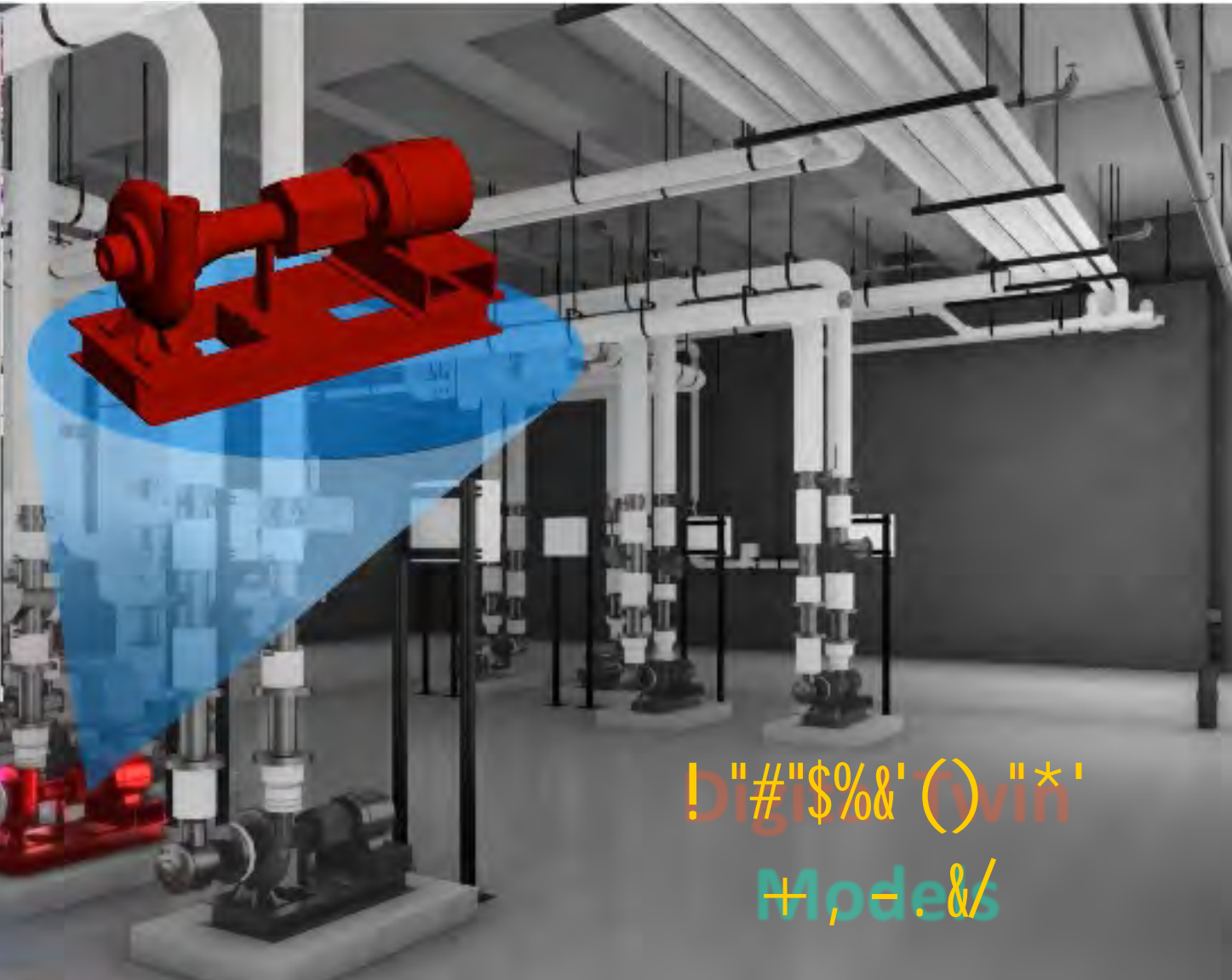
Digital Conceptual Review



[!""#\\$%&'\(\)*+,-./:;&"'012314&56-7&8093322](http://!)



Mechanical Equipment (2)	
Phase Created	New Construction
Phase Deleted	None
Name	
COBie	01
COBie Identifier	
COBie CreatedBy	bin@pinetec.com
COBie CreatedOn	2014/07/16 10:40
COBie Component Name	PUMP
COBie Component Owner	To Be Filled
COBie Component Installation	To Be Filled
COBie Component Manufacturer	To Be Filled
COBie Component Taglines	HWP-LL
COBie Model Name	HTLA-C0807T
COBie Model Number	200-85
COBie Model Desc	To Be Filled
COBie Component Manufacturer	8000 68800011100 400 1000
COBie Electrical Process across chiller	
COBie Material	Stl
COBie Lead (FT)	42' 0.0000'
COBie HVAC/CHW Temperature	
COBie HVAC/CHW Temperature	
COBie Motor HP	2
COBie Pump ID	002
COBie Pump Valve Position	To Be Filled
COBie Service	6651862 665186 665186
COBie DFD Alarm/Alert	To Be Filled
COBie DFD Alarm/Alert Position	To Be Filled
COBie Equipment Location	To Be Filled
COBie Max Pump Speed (RPM)	1800
COBie	
Schedule Level	
EQUIPMENT - CONDIGATE CONNECTION	01
EQUIPMENT - ELECTRIC CONNECTION	01
EQUIPMENT - GAS CONNECTION	01
OPERATING WEIGHT	
SWR	
MCL	
Element ID	001007
Equipment Name	



!"#\$%&'()*+,-./:;
 +,./:;&/

COBie Data Integration



0"1\$2%&342#5. *\$. -'6. %&"\$7'8063469

#\$

! " # \$ % & ' () * + , - . : ; < = > ? @ [\] ^ _ ` { | } ~ ! " # \$ % & ' () * + , - . : ; < = > ? @ [\] ^ _ ` { | } ~

! " # \$

! % & ' S

! " ()

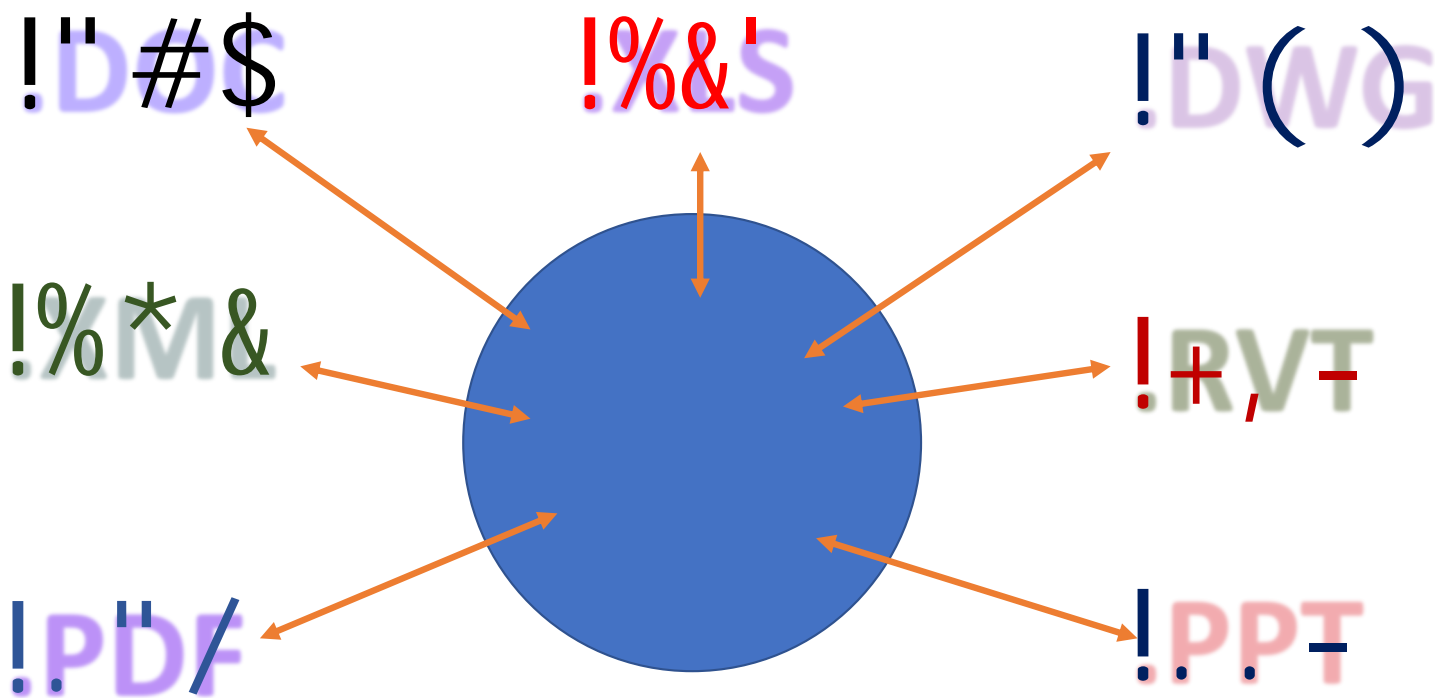
! % * &

! + , -

! . P D F /

! . P P T -

! " # \$ % & ' () * + , - . & ' \$ ()



/. (% , 00*1 (#&2 (.&'\$(

"0123405

\$647589765

'Supplier; <205

*84:=897:505

> 405

? : 2 < @ 243A# ; 058765

/. (% , 00*1 (#&2 (.&'\$()

> 405

' 0123405

\$ 647589765

* 84 : = 897 : 505

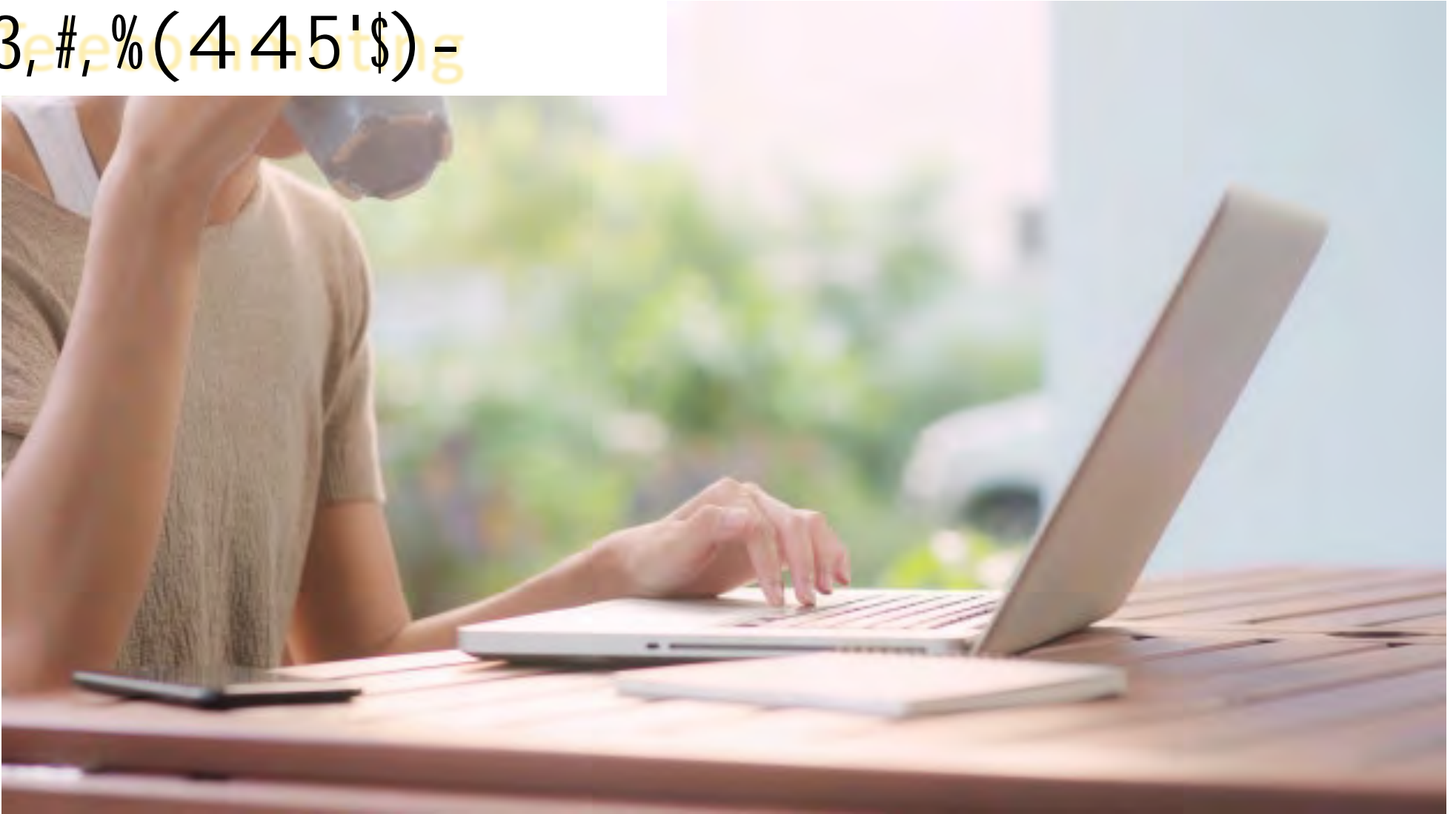
' : ; ; < 205

? : 2 < @ 243A # ; 058765

What is in the Future?

Advances in Technology
and the AEC Industry

3, #, % (445 '\$) =



3, #, % (445 '\$) =

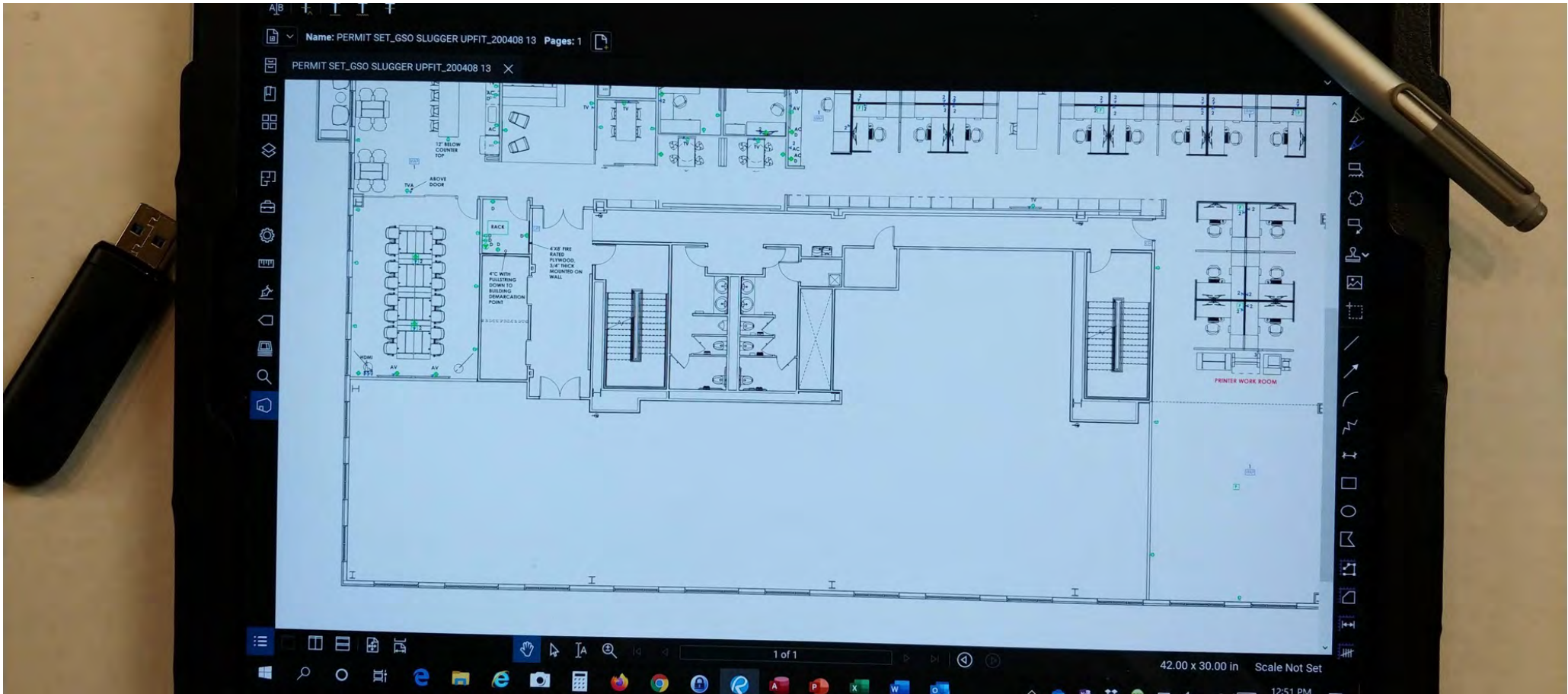
! / (65% '\$7\$'89

! 1 (445 '\$) =

! 3.&7, #*+)650'.8

! 1 (44, .%\$&#* : , &#* ; 0'&'

! " # \$ % & ' (



! " # \$ % & ' (



! " # \$ % & ' (



! " # \$ % & ' () * +

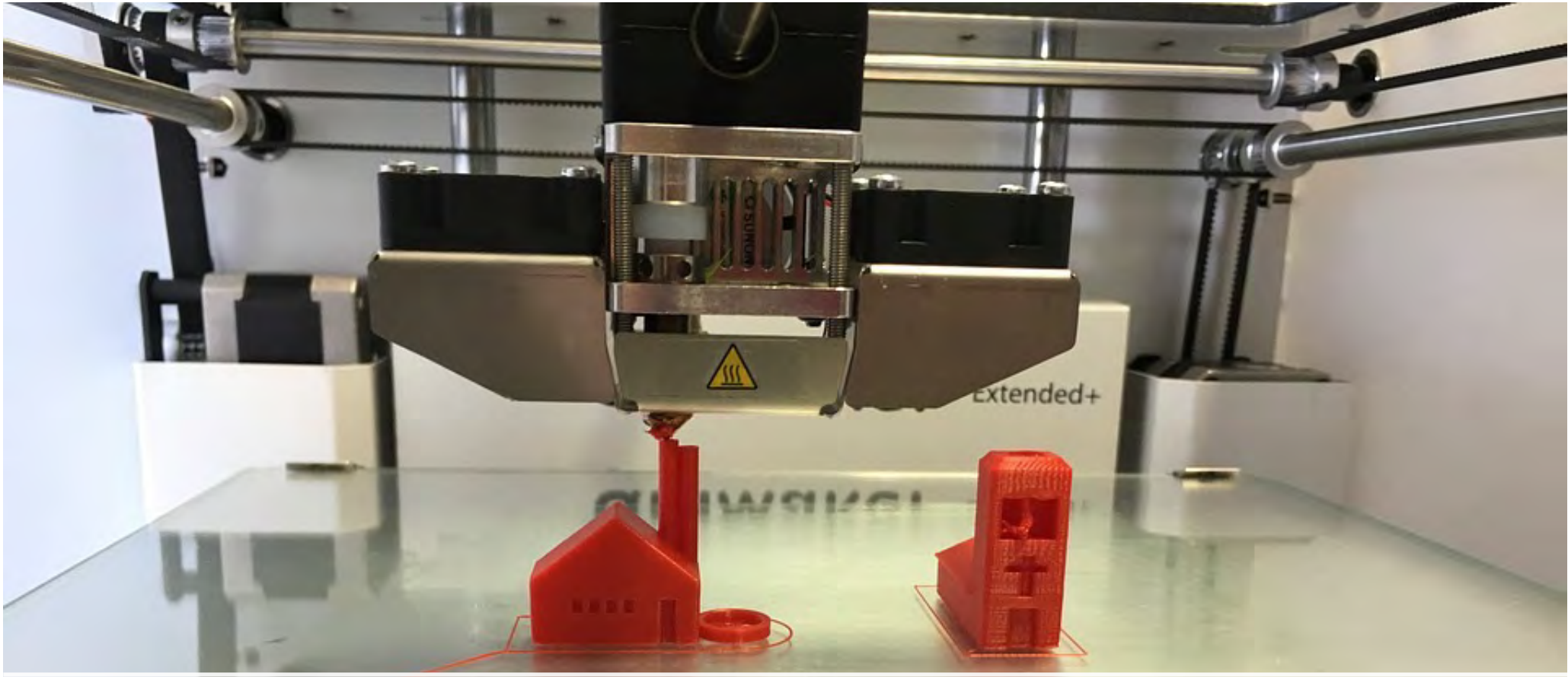
! " # \$ % & ' (

!""#\$%&'#
() * + & , - . & % *
Dinre
Dinre

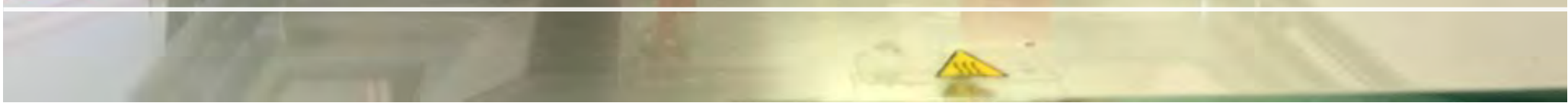


!""#\$%&'#
() * + & , - . & %) *
Dinara
Dinara



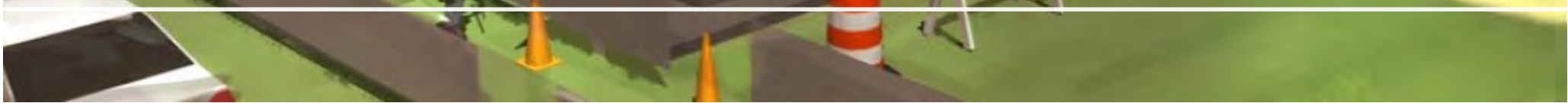


! " # \$ % & ' () * (



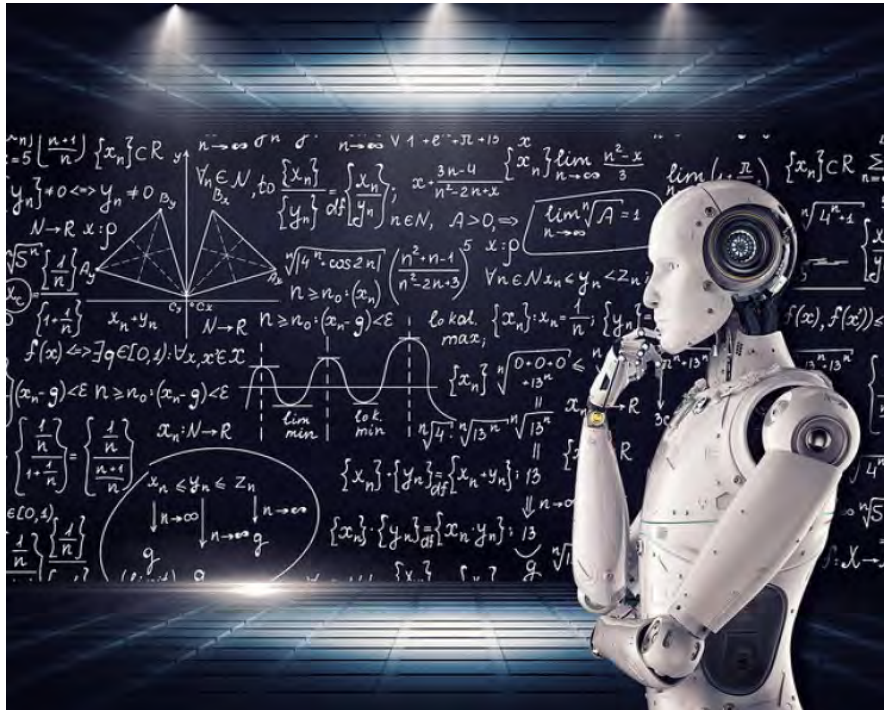


!"#\$%&'()*'(*\$'(\$+,(-)&./)',(



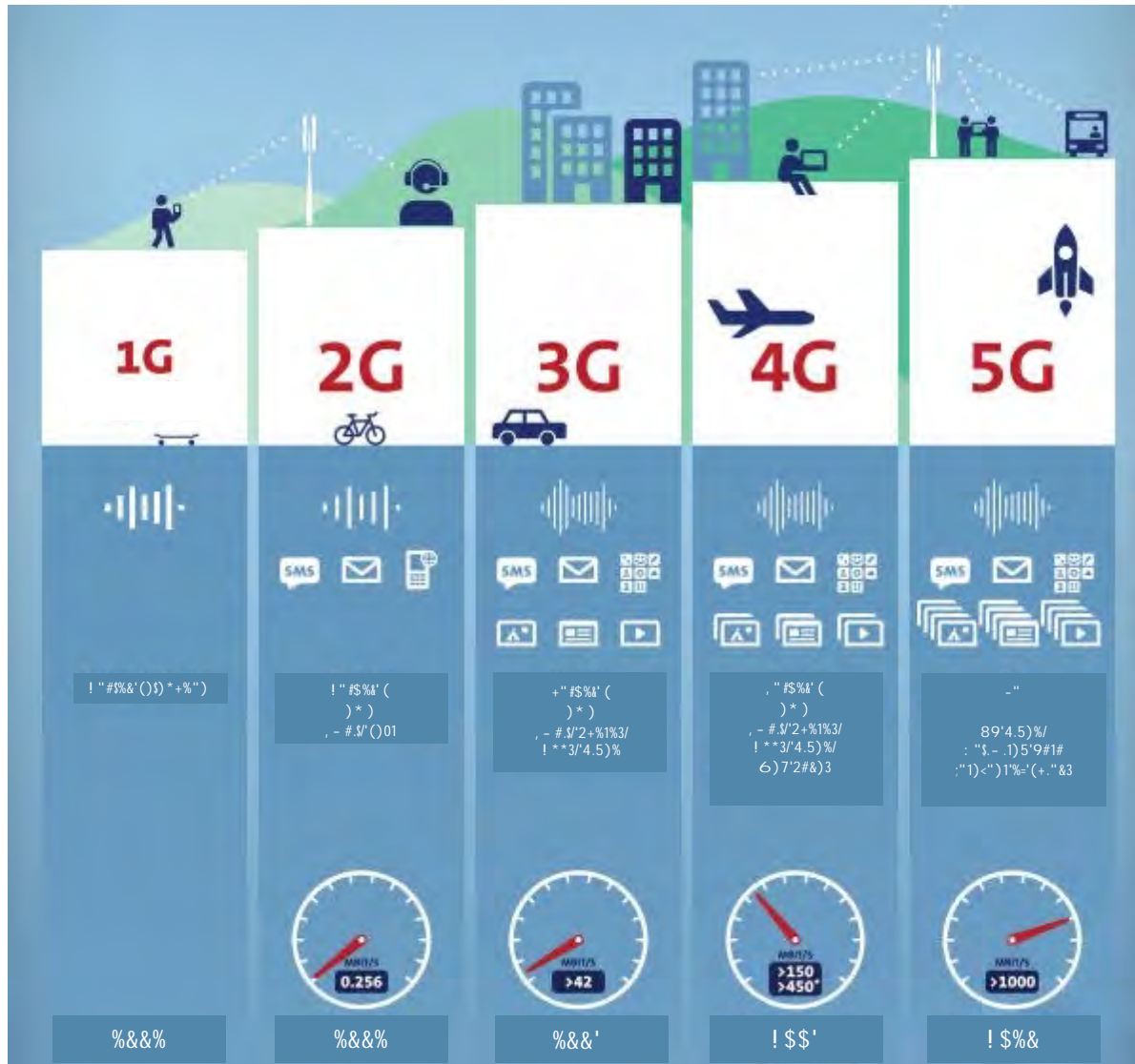


! " # \$ % & ' () * ' (\$ + , (-) & . /) ' , (



O&)'1'/'23\$()533'*5 (/5

!"#\$%&'()"\$*+\$)*, -./#&\$0)1#()#0\$/''' /\$
 #, -"' 012#0\$/''#\$3#4#5*- , #(/\$*+\$
 1(/#5516#()#\$, ')"1(#07\$5#' &(1(67\$/''1(81(6\$
 '(3\$9*&81(6\$518#\$. , '(0:



9:*

7, .8<=, .,

!"#\$%&'()*+,-
./:0

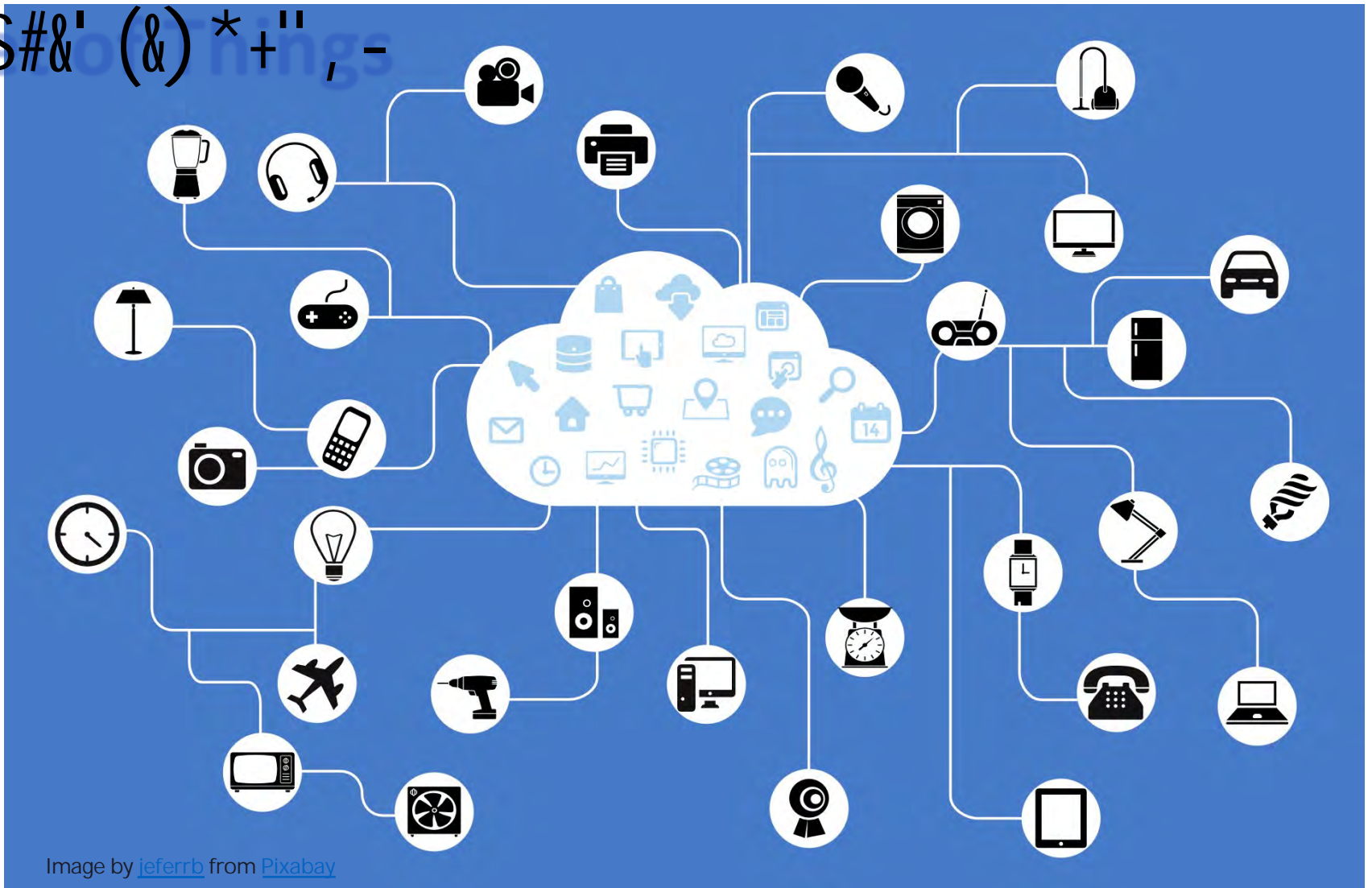
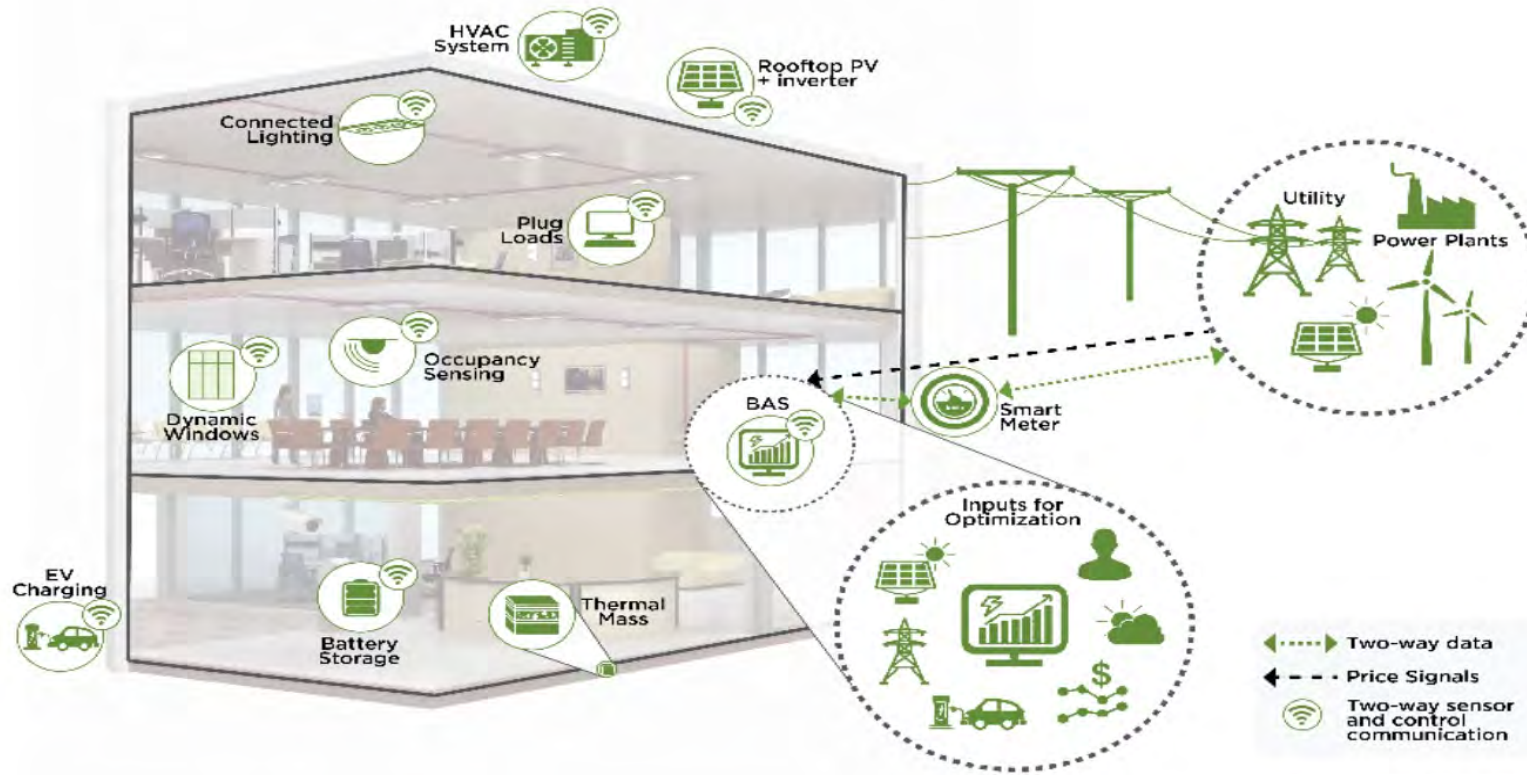


Image by [jeferrb](#) from [Pixabay](#)



!"#\$%&'(#)*#+,)-.)*/0



Source: US. Department of Energy, Office of Energy Efficiency & Renewable Resources

!"#\$%&'(#)*#+,)-.)* /0

!"#\$%&'(

!"#\$%&'()*+(-, #&-

!./012#/312#%*)12+1*#4.5%6

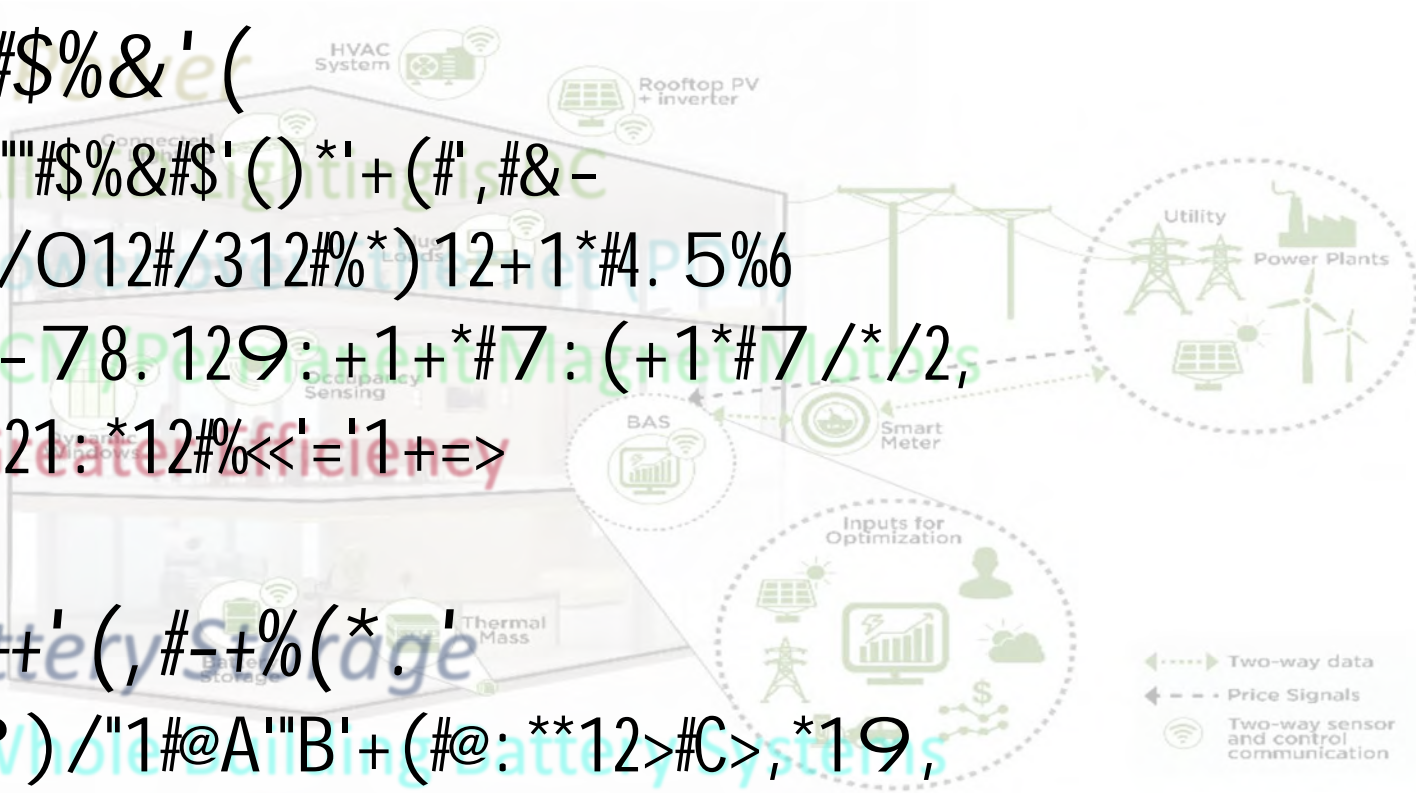
!%-78.129:~+1+*#7:(+1*#7/* /2,

!;21:*12#%<<'='1+=>

!)**++'(-, #~+%(*)'.

! ?) /"1#@A"B'+(#@:**12>#C>,*19,

!@A"B'+(#D1,""1+=1



Source: US. Department of Energy, Office of Energy Efficiency & Renewable Resources



The Future is Exciting!

Advances in Technology
and the AEC Industry

Thomas H. Phoenix, P.E.,
FASHRAE, LEED AP
tphoenix@cplteam.com

K. Scott Gordon, AIA
NCARB, LEED AP
sgordon@cplteam.com



Questions?

Advances in Technology
and the AEC Industry

www.cplteam.com